



Engineering with Plastics





**2K molding
capability**

**IPR
Protection**

Serving Fortune
500 companies

**IML
capability**

**ISO Certified
organisation**

**Plastic
Extrusion**

**Plastic
Machining**

Do you have these concerns from your

Injection molding supplier?

Is your Intellectual Property secure in their hands?

Is tool design and manufacturing an in-house function?

Is there a single point accountability process?

Is plastics engineering their core competency?

Can they help you become more sustainable?

Can they help you become more competitive?

Can they offer assembly and testing?

Do they have product design and rapid prototyping capability?

Do they have plastic compounding capability?

Can you trust them?

Do they have world-class quality systems?

If you have these concerns, it's time to relook at your supply chain network

In the domain of plastic engineering,

Our customers rely upon us for...

Sustainable partnerships

Import substitution

World-class quality

Metal to plastic substitution

Total plastics solutions

Setting up their base in India to cater to the global market

Process optimization through scientific molding

OEM / ODM capabilities

Contract manufacturing



Access the entire spectrum
of plastic engineering process

Under one roof



Jyoti World is the centrifugal part of the value solution that offers Mold making, Injection Molding and Assembly under one roof.

TOOLING

CNC milling machines
Spark erosion (EDM) machines
CMM/Digitizing
Capacity of upto / 400 tons / 3-5 molds a month
Tooling max size: 1.5 m x 1.5 m

INJECTION MOLDING

Processing of Engineering & specialty polymers like PPO, PC, Nylon, PVDF, PEEK, LCP. Can mold wall thickness of 0.5 mm to 25 mm (porosity-free) with wide range of product weight with 0.05 mm accuracy on molded components.

EXTRUSION FACILITY

Manufacturing profiles made out of Engineering Plastics, TPE, TUP, PVC & Bio-Polymers.

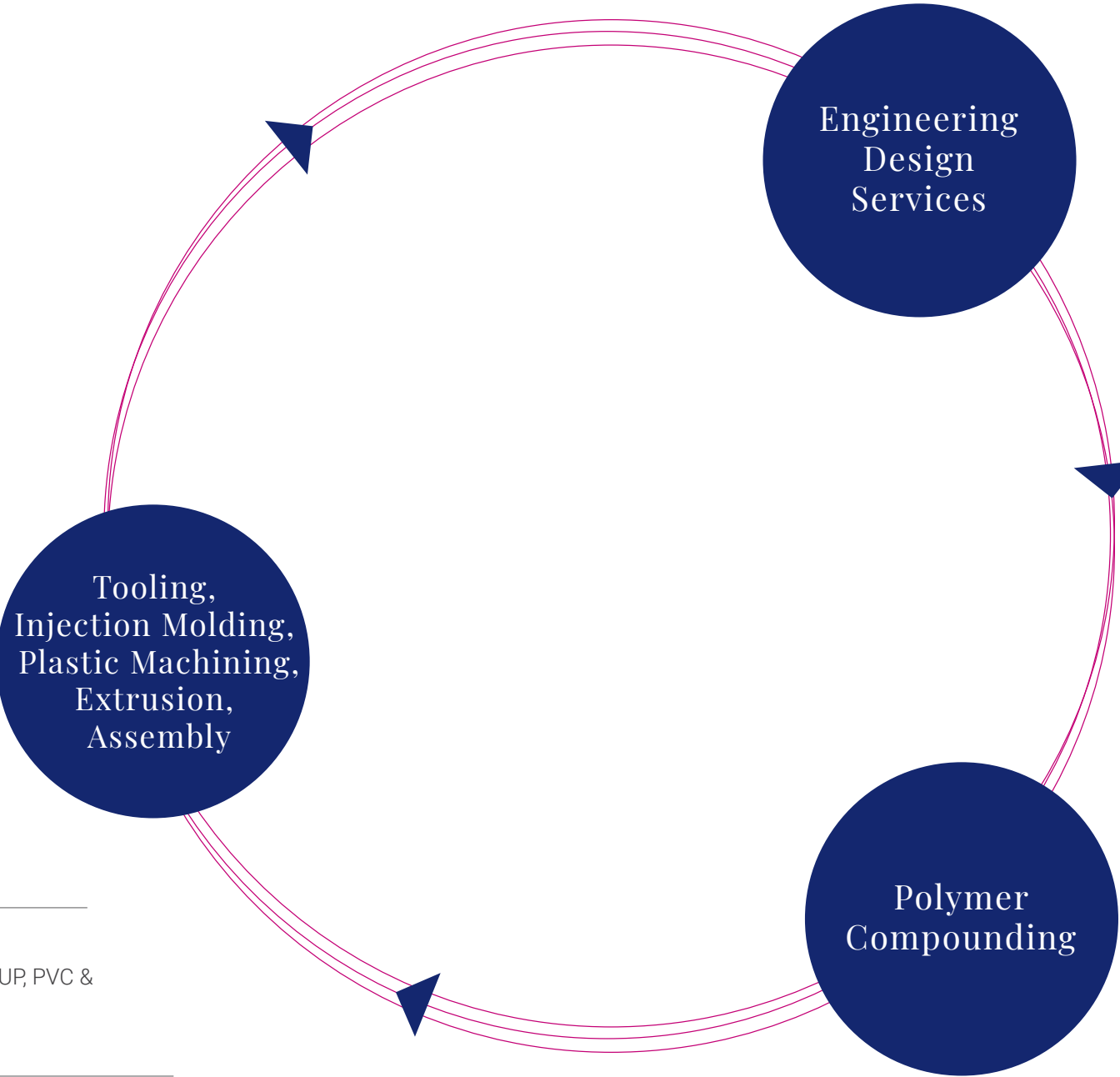
Extrusion M/c : Mono-extrusion, Twin-extrusion, Tri-extrusion

POST MOLDING OPERATIONS

Ultra sonic, Solvent welding, Printing, Balancing, Machining and Assembly capability.

PLASTIC MACHINING

Machining capability for blocks having thickness upto 600mm



360°

Contract manufacturing solution

Get an added edge with our key value addition
- Design & Development capability

Capability - Flow, Cool, Warp, Fiber, Over Molding, Gas Injection & Co-injection simulation.

Concept Design (2D/3D Modeling)	Scientific Molding
Reverse Engineering	Digital manufacturing
Product Engineering	Digital Mock-Up
Rapid Prototyping/Tooling	Reliability testing
Meshing & Structural analysis	Value Analysis/QFD/FMEA/FEA/CFD
Mold Design & Detailing	GD&T/APQP/PPAP

Silver certified Moldflow Consulting Partner

An Indo-American joint venture that manufactures and distributes engineering compounds and additives.

Associate manufacturing units in USA, Canada, Mexico and China.

Polyamide (Nylon) 6 & 66 - Glass fiber Reinforced and Mineral reinforced
PPE - Glass Fibre reinforced
PBT - Antistatic / Glass reinforced
PP - Glass Fibre reinforced
Alloys & Blends - UV / Heat stabilized
Custom made grades – colouring

Our infrastructure fuels

Our passion

Our
Manufacturing
facility

Khadki
Gujarat

Dungri
Dungri

Khadki
Manufacturing area

4 lac sq. ft.

Distance
from Mumbai

200 km

Extrusion
Machines

16 m/c

Type : Mono-extrusion,
Twin-extrusion, Tri-extrusion

Plastic Machining Shop

7 M/c

Injection
Molding Machines

50 m/c

Range capacity

60 T to 1200 T

Shot weight capacity

3 gms to 5500 gms

Range

Machining capability upto **600mm**

Our in-house facilities
empower us for excellence in

**Injection Molding
& Plastic Extrusion**

Core molding capabilities

- Thick walled molding
- Thin walled molding
- Insert molding
- IML/IMD
- Multi component/material/color (2K)
- Micro molding
- Cellular climate control molding
- Scientific molding
- Foaming – Chemical / Mu cell
- Over molding

Post molding capabilities

- Ultra sonic welding
- Solvent welding
- Heat sealing
- Insert molding
- Screen/Pad printing
- Dynamic balancing
- Machining & Assembly
- Laser cutting
- Customized product testing

EXTRUSION FACILITY

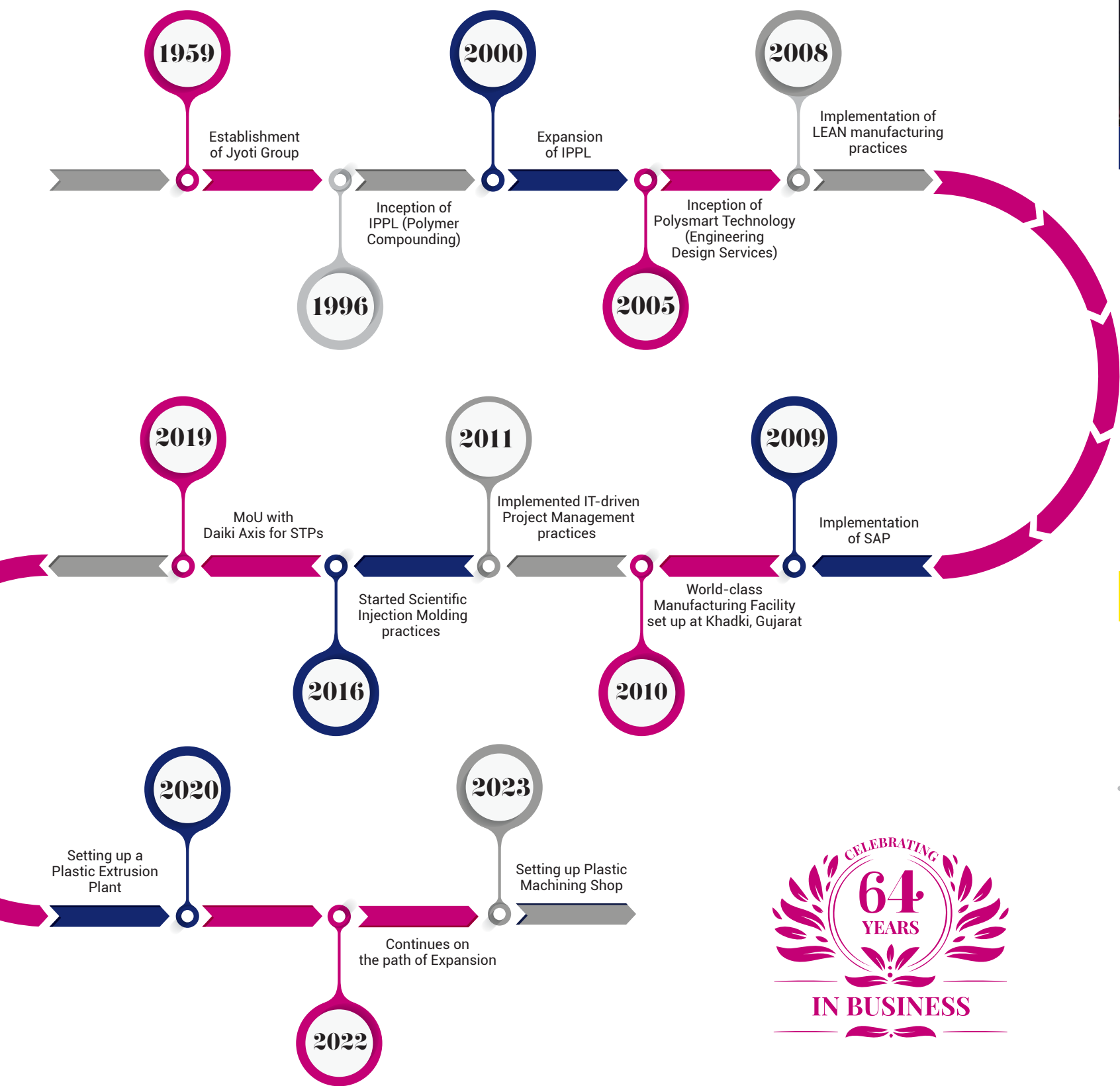
Manufacturing profiles made out of Engineering Plastics, TPE, TUP, PVC & Bio-Polymers.

Application : Profile for Automotive, Furniture, Medical, Construction, POS, Kitchen Cabinets



We share expertise
accumulated over the years.

Our 6 decade
rich journey

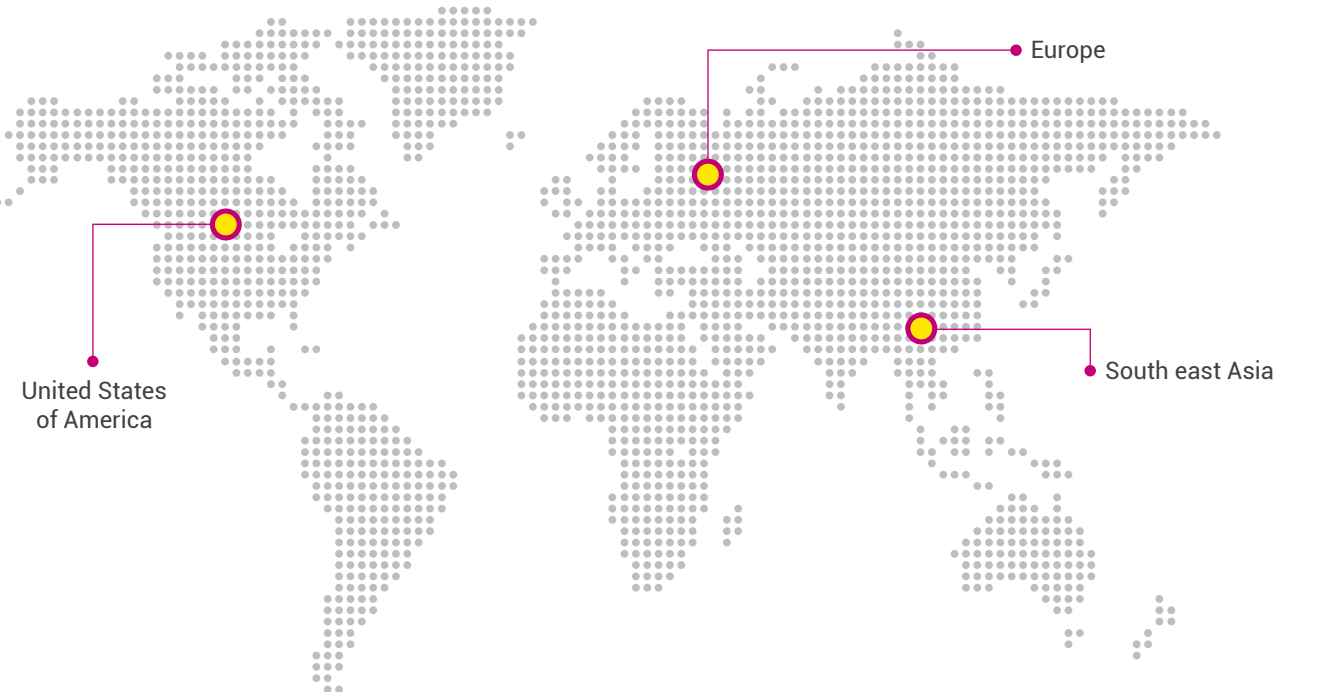


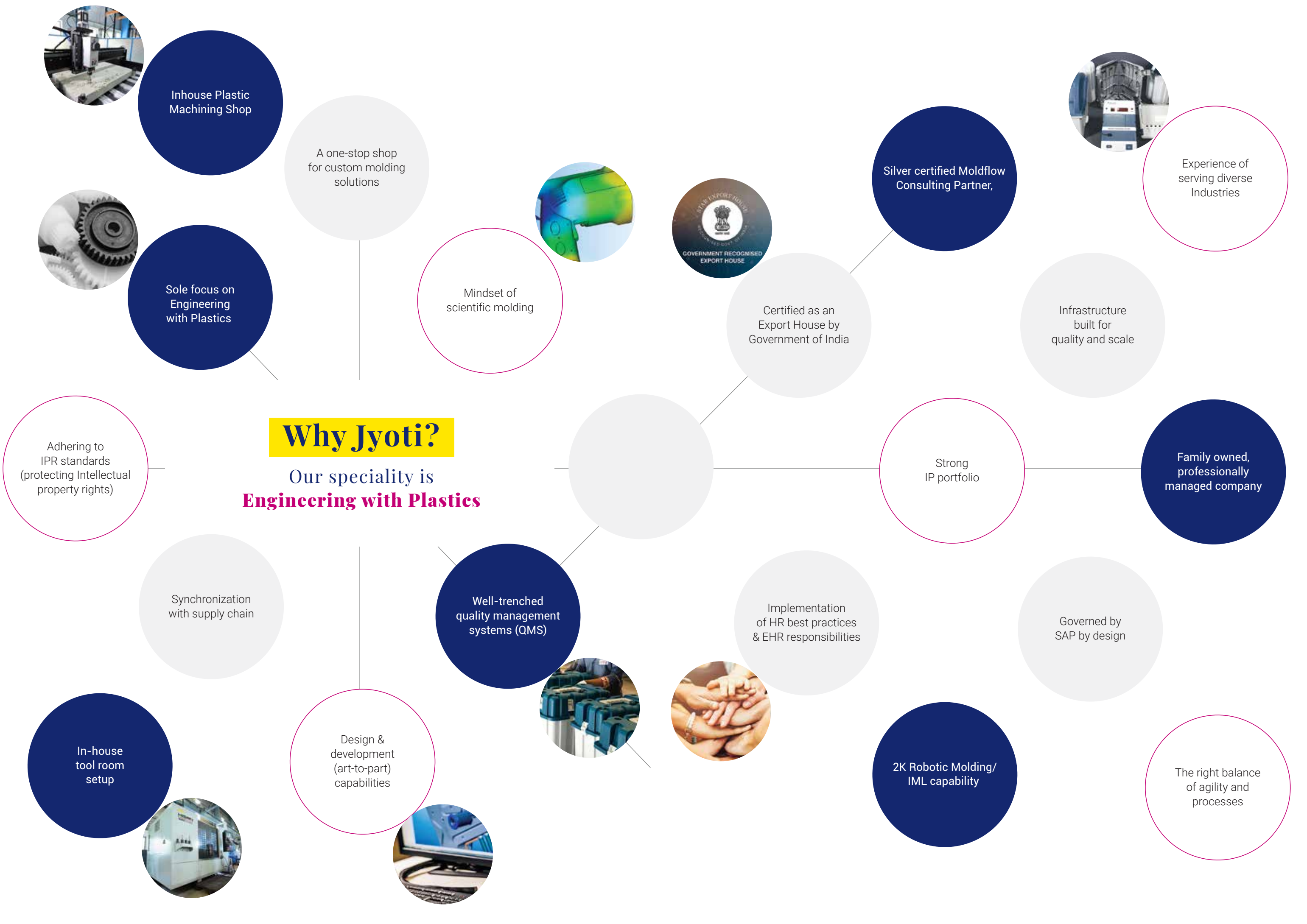
Our expertise and passion
got its fair share of spotlight.

Awards &
Recognitions



Based out of India, shipping
injection molded components
Across the Globe







Our mindset

Follow the process Quality will follow

We believe that Recruitment and Quality are deeply inter-connected. A company cannot instill quality parameters if its human factor is misaligned or simply not capable.

We are heading towards Kaizen and Six Sigma practices and understanding key parameters of quality standards is a KRA of every individual across the manufacturing hierarchy. Zero deviation from set norms is the Quality language on our shop floor.

We succeed because we solve a vital supply chain challenge

Reliability

Ownership and authority at operator level (mistake proofing)

In house inspection, testing & quality assurance systems

Ability to develop job specific non-standard testing processes with green channel supplier certification capabilities

Just-in-time manufacturing

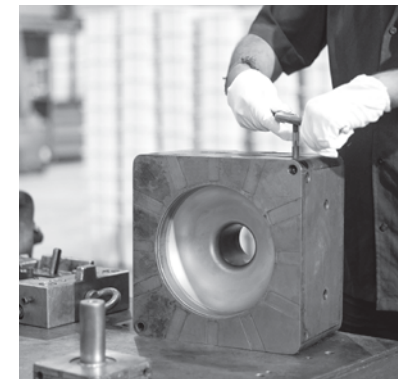
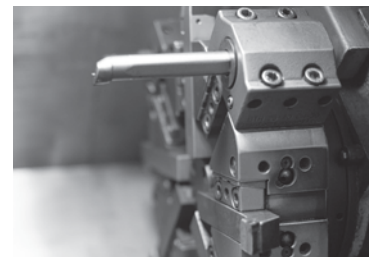
Statistical process control moving product and process quality towards Six Sigma levels

Six Sigma – DMAIC / DFSS methodology

KAIZEN

LEAN

Industry 4.0 compliant



Accreditations

Authorized and silver certified Moldflow Consulting Partner

ISO 9001:2015 & ISO 14001:2015 certified organisation

Export House certification





The selection criteria of several Fortune 500 companies can't be flawed.

They chose us because they get wholistic

Solutions in Engineering with Plastic



Mission

To enhance quality of life through engineered solutions.
Build the best product, cause no unnecessary harm.
Use business to inspire and implement solutions to the environmental crisis.

Vision

To be among the most respected companies that provide total solutions in engineering plastics & composites globally by March 2025.

Values

Joy in relationship between all stakeholders. Yield maximum return on investment to all stakeholders. Open to new ideas, feedback and learning
Teamwork to ensure customer delight. Innovation & creativity for profitable & sustainable growth.

Quality policy

We are in the business of providing Engineered solutions globally. Our policy is to endeavor to continually achieve & exceed customer satisfaction.

We will achieve this by-

Meeting & exceeding customer requirements and needs, through continuous improvement in our products & services.

Continually enhancing employee competence.

Continually adapting the right technology in our business processes.

Establishing, implementing & maintaining ISO 9001 : 2015 QMS





Jyoti World Pvt. Ltd.

94, Bombay Talkies Compound, Malad (West),
Mumbai - 400 064. India

Tel.: +91 22 2882 4448 / +91 22 2882 3241

poak@jyotiworld.com

www.jyotiworld.com